

DAF NGD STONEGUARD MOUNTING GUIDE



THE STONEGUARD COMES WITH 5 FIXED MOUNTING POINTS



INSTALL THE BRACKETS DELIVERED WITH THE STONEGUARD

IN THE FOLLOWING WAY.



BRACKET POSITION 2 AND 4 (INSIDE VIEW)



BRACKET POSITION 2 AND 4 (OUTSIDE VIEW)



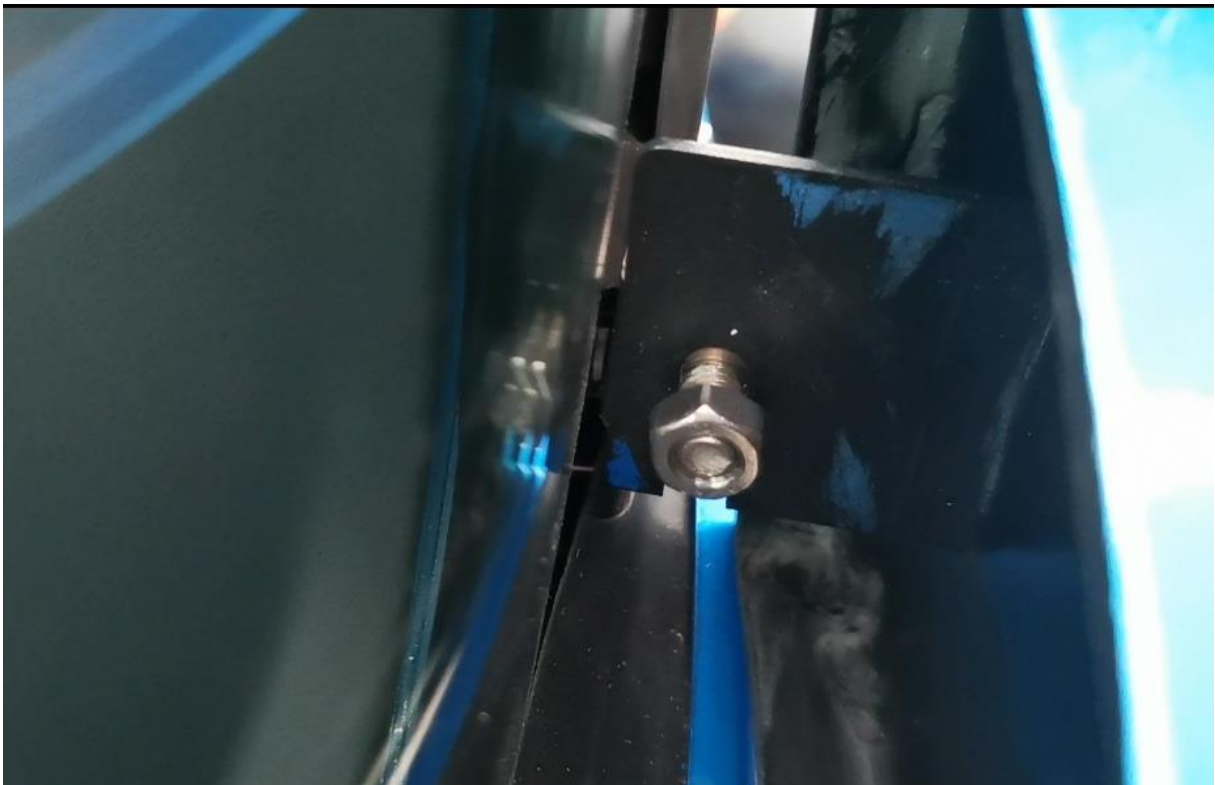
BRACKET POSITION 3 (MIDDLE BRACKET)



**BRACKET POSITION 3 (MIDDLE BRACKET INSIDE VIEW)
FIX WITH A NUT AND BOLT AND POP RIVET AS SHOWN.**



BRACKET POSITION 1 AND 5.



BRACKET POSITION 1 AND 5 INSIDE VIEW.



FIRST TEST FIT THE STONEGUARD BEFORE PAINTING. PAINTED RETURNS WILL NOT BE ACCEPTED. THE STONEGUARD IS MOUNTED ON 5 FIXING POINTS AND CAN BE REMOVED TO OPEN THE GRILLE OR FOR PERIODIC TESTING PURPOSE.

ALL SENSORS REMAIN IN FUNCTION. A CUT OUT IS REQUIRED FOR THE CORNER EYE CAMERA (SPECIFY WITH YOUR ORDER)

THE MOUNTING DIFFICULTY RATING FOR THIS PRODUCT IS EXPERT
THIS STONEGUARD IS FOR LHD VEHICLES ONLY, THE RHD VERSION IS AVAILABLE FROM MAY 2023.



SolarGuard
SOLARGUARD.NL

EXCLUSIVE TRUCK PARTS

INFO@SOLARGUARD.NL